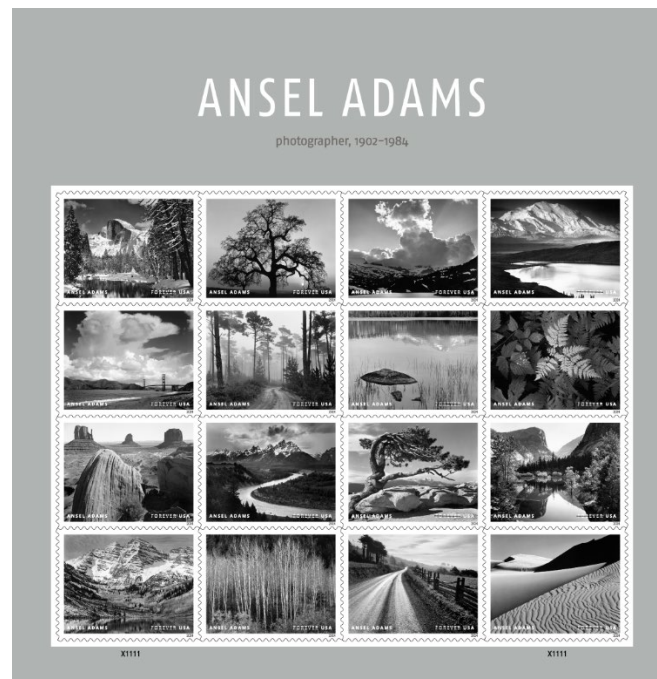




FOR IMMEDIATE RELEASE
May 15, 2024

National contact: David P. Coleman
Cell: 202-425-1476
david.p.coleman@usps.gov

Local contact: Meiko Patton
meiko.s.patton@usps.gov
usps.com/news



Ansel Adams' Timeless Portraits Immortalized on Stamps

YOSEMITE NATIONAL PARK, CA — Today, the Postal Service shined new light on the majestic black-and-white photography of Ansel Adams with stamps celebrating his iconic work. Adams was one of America's most renowned and influential artists. A dedication ceremony for the stamps was held at the [Ansel Adams Gallery](#) in Yosemite National Park. News of the stamps is being shared with the hashtag **#AnselAdamsStamps**.

“As a masterful photographer and dedicated environmentalist, Ansel Adams allowed Americans from all corners of the nation to experience the wonders of our country in vivid detail,” said Daniel Tangherlini, a member of the USPS Board of Governors. “There have been many advances in photographic technology in recent decades, but the clarity and character of an Ansel Adams image is timeless and unsurpassed, just like you see on these stamps unveiled here today.”

As an artist, Adams sought to imbue each of his black-and-white prints with the power and wonder he felt in the presence of nature. As an activist, he influenced U.S. environmental policy by employing his photographs as lobbying tools. Many of his images of the country's most beautiful places — including the Yosemite Valley, the Tetons and Denali — became icons of the environmental movement.

Throughout a photographic career spanning seven decades, Adams received praise and recognition for his work. The University of California, Berkeley, and Harvard and Yale universities awarded him honorary doctorates. The Metropolitan Museum of Art in New York held a retrospective exhibition of his photography in 1974, as did the Museum of Modern Art, in 1979. In 1980, President Jimmy Carter awarded Adams the Presidential Medal of Freedom.

“Ansel’s passion for his craft, willingness to share his approach and technique, and dedication to both protecting and preserving the environment had a profound influence on how I approached my own journey as a photographer,” said Alan Ross. “It’s wonderful to see Ansel’s artistry and love for natural wonders like Yosemite embodied on U.S. postage stamps.”

The first row of stamps, left to right, features “Half Dome, Merced River, Winter, Yosemite National Park, California” (1938); “Oak Tree, Sunset City, Sierra Foothills, California” (1962); “Thundercloud, Ellery Lake, High Sierra, Sierra Nevada, California” (1934); and “Denali and Wonder Lake, Denali National Park, Alaska” (1947).

The second row, left to right, features “The Golden Gate and Bridge from Baker Beach, San Francisco, California” (c.1953); “Road and Fog, Del Monte Forest, Pebble Beach, California” (1964); “Rock and Grass, Moraine Lake, Sequoia National Park, California” (1936); and “Leaves, Mount Rainier National Park, Washington” (c.1942).

The third row, left to right, features “Monument Valley, Arizona” (1958); “Tetons and Snake River, Grand Teton National Park, Wyoming” (1942); “Jeffrey Pine, Sentinel Dome, Yosemite National Park, California” (1940); and “Mirror Lake, Mount Watkins, Spring, Yosemite National Park, California” (1935).

The fourth row, left to right, features “Maroon Bells, near Aspen, Colorado” (1951); “Aspens, Dawn, Autumn, Dolores River Canyon, Colorado” (1937); “Road After Rain, Northern California” (1960); and “Dunes, Oceano, California” (1963).

As evidenced by the striking images in this collection, Adams devoted much of his career to the advancement of photography as a fine art. He wrote and photographed extensively for the Sierra Club Bulletin, exhibited his prints at museums across the country, gave lectures on photography’s artistic merit, taught thousands of students in workshops, and helped create the first museum photography department, at New York’s Museum of Modern Art.

“It’s an incredible honor for Ansel,” said Matthew Adams, his grandson. “It shows that his popularity continues 40 years after he passed. His work resonates across time. He would be excited and honored.”

Derry Noyes, an art director for USPS, designed the stamps using existing photographs. The Postal Service printed 20 million Ansel Adams stamps, which come in panes of 16. The stamps are issued as Forever stamps, which are always equal in value to the current First-Class Mail 1-ounce price.

Postal Products

Customers may purchase stamps and other philatelic products through the [Postal Store](#) at usps.com/shopstamps, by calling 844-737-7826, by mail through [USA Philatelic](#) or at Post Office locations nationwide. For officially licensed stamp products, shop the [USPS Officially Licensed Collection on Amazon](#). Additional information on stamps, First Day of Issue Ceremonies and stamp inspired products can be found at StampsForever.com.

###

Please Note: The United States Postal Service is an independent federal establishment, mandated to be self-financing and to serve every American community through the affordable, reliable and secure delivery of mail and packages to 167 million addresses six and often seven days a week. Overseen by a bipartisan Board of Governors, the Postal Service is implementing a 10-year transformation plan, [Delivering for America](#), to modernize the postal network, restore long-term financial sustainability, dramatically improve service across all mail and shipping categories, and maintain the organization as one of America’s most valued and trusted brands.

The Postal Service generally receives no tax dollars for operating expenses and relies on the sale of postage, products and services to fund its operations.

For USPS media resources, including broadcast-quality video and audio and photo stills, visit the [USPS Newsroom](#). Follow us on [X](#), formerly known as Twitter; [Instagram](#); [Pinterest](#); [Threads](#) and [LinkedIn](#). Subscribe to the [USPS YouTube Channel](#) and like us on [Facebook](#). For more information about the Postal Service, visit [usps.com](#) and [facts.usps.com](#).